

Platinum In-Wall 3G

Product Manual



Register your Platinum In-Wall 3G speaker

Register your speakers using the QR code
or visit monitoraudio.com/registration



Welcome to Platinum Series 3G

Thank you for purchasing this Platinum Series 3G speaker, you're now ready to start your journey to breathtaking sound. In this product manual, you'll find information about setting up your system and how to maintain your speakers for a lifetime of enjoyment.


If you need any further assistance, please contact our technical team at monitoraudio.com/support

Contents

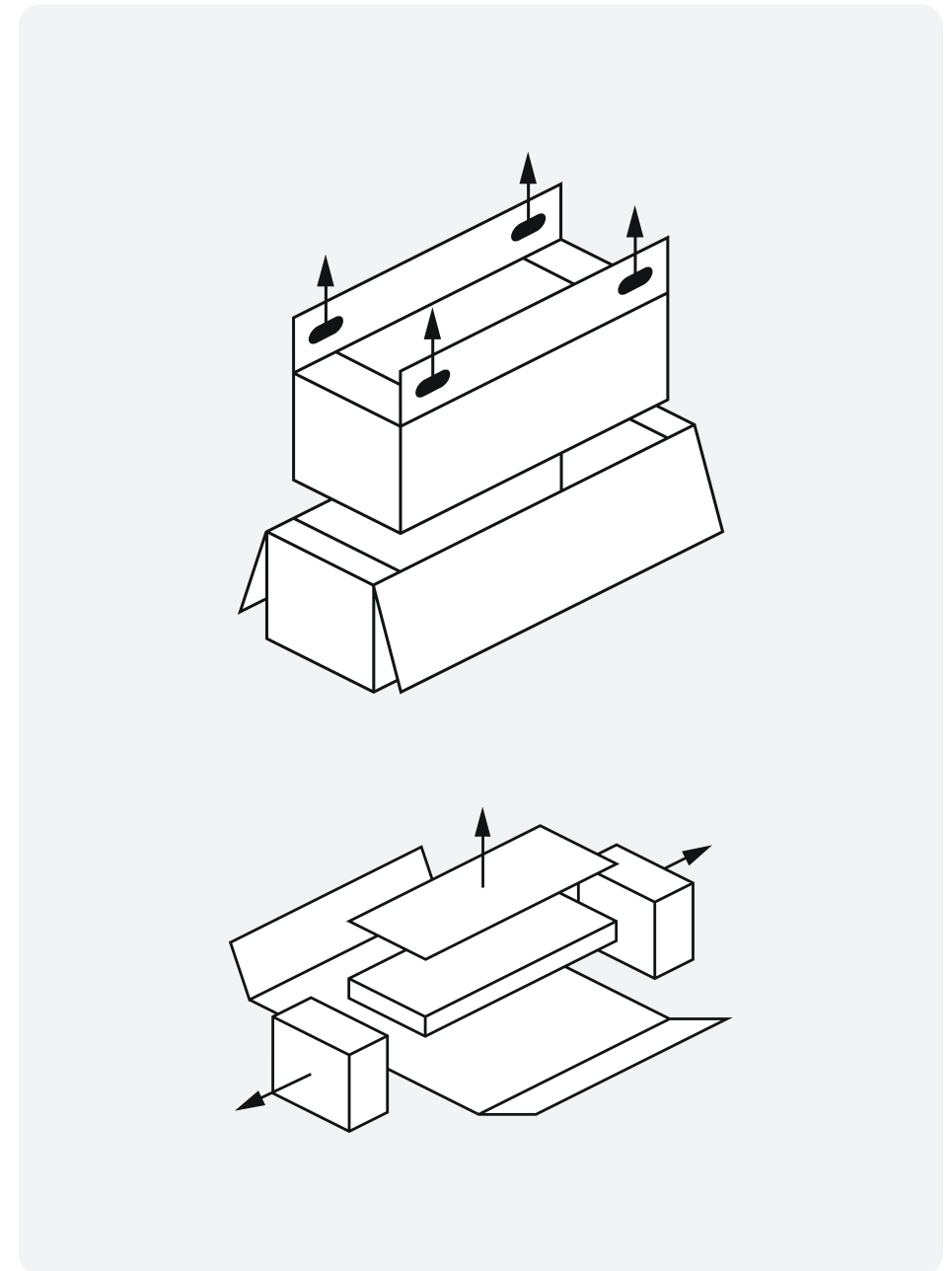
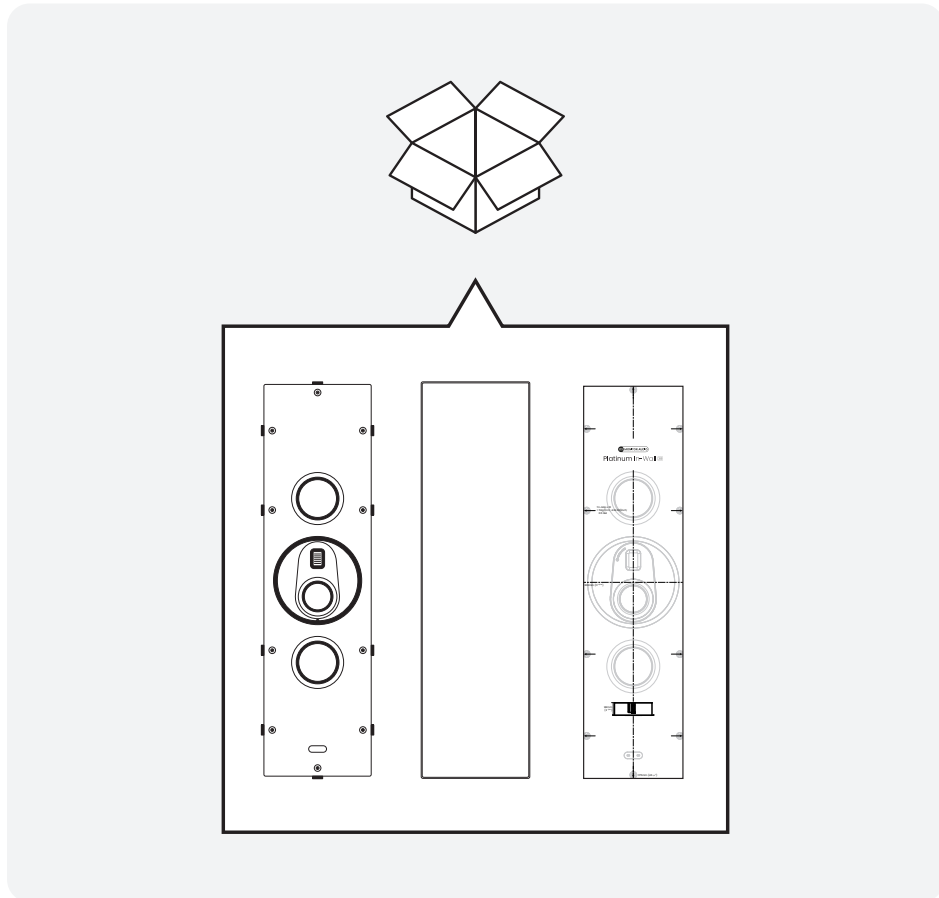
Unboxing	4
Tweeter and Mid-range assembly rotation	6
Setting up your system	8
Using your speakers	16
Warranty	18
Specifications	19

Unboxing

Before you unpack your speakers, please make sure that there is plenty of available floor space.

 **WARNING: DO NOT attempt to lift the speaker alone.**
The recommended number of people is printed on the outer carton.

Lay the box down on the floor so the opening is facing up. Open the outer carton and then use the handles of the inner cardboard sleeve to lift the speaker and packaging out of the box. Once clear, remove the polystyrene end caps and then the cloth bag.

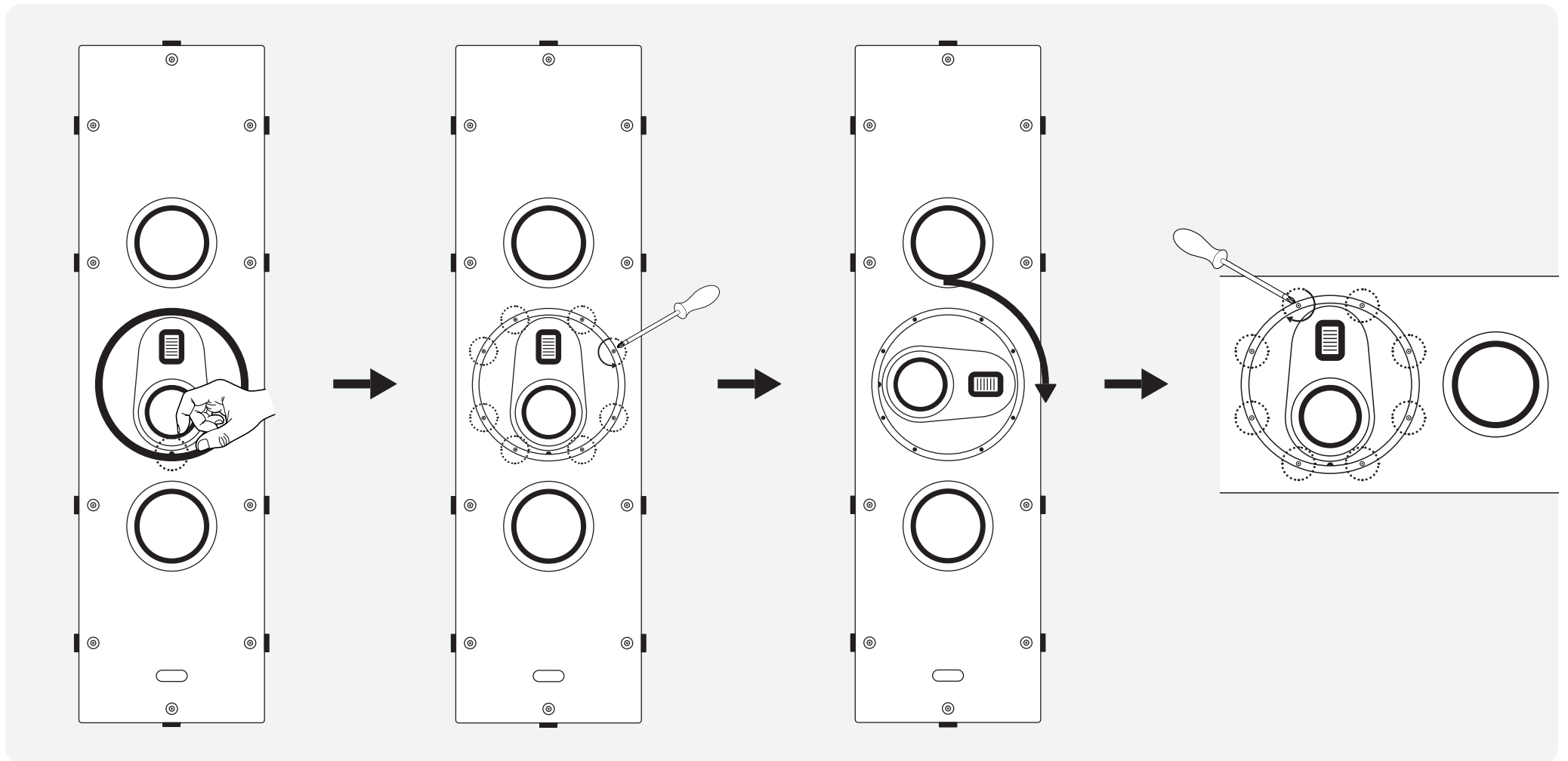


Transducer and mid-range assembly rotation

The Platinum In-Wall 3G has the ability to be positioned in a left/right vertical or horizontal centre channel configuration.

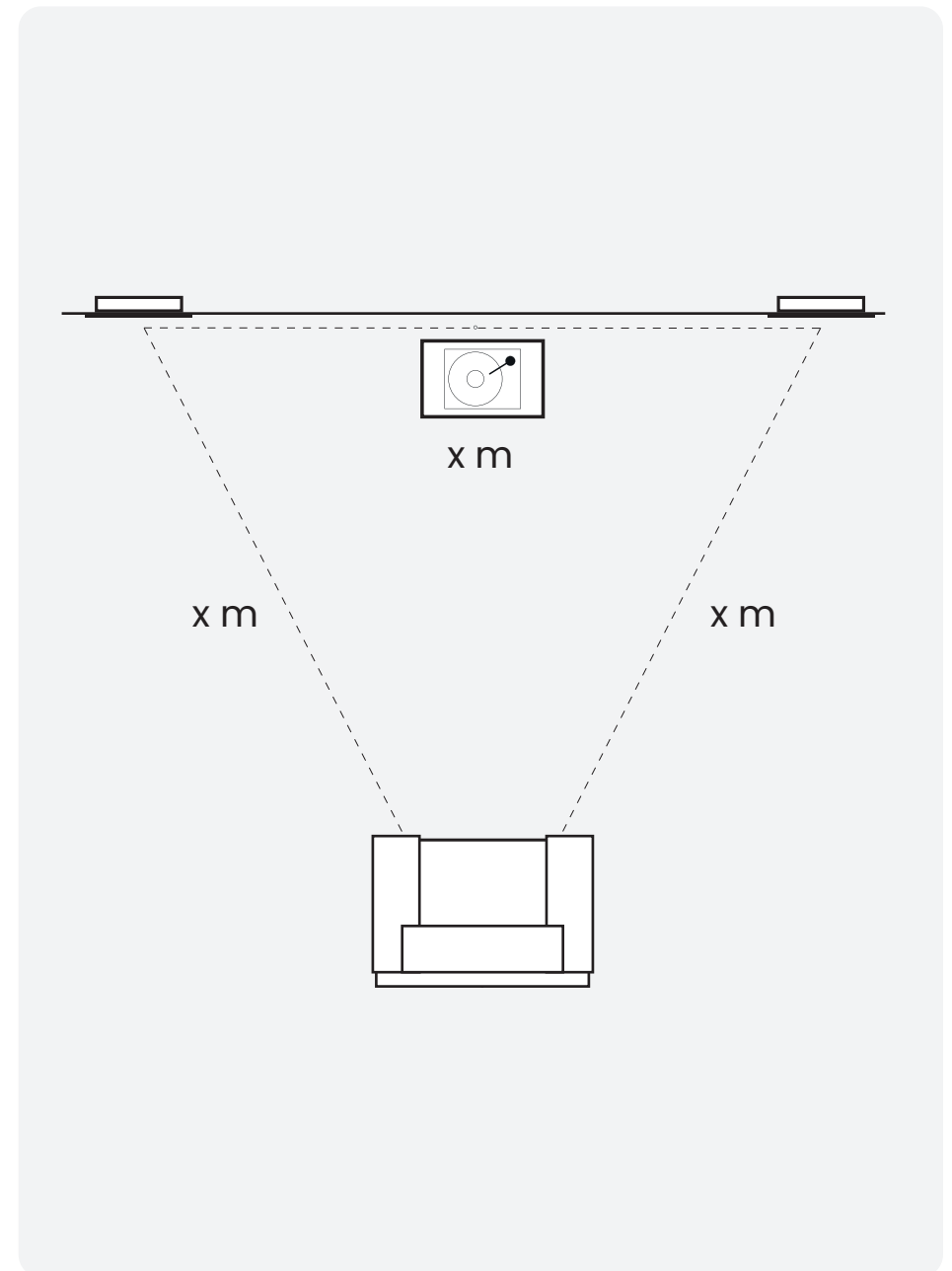
To position the Platinum In-wall 3G in a horizontal centre channel position, rotate the 'mid-pod' that houses the MPD transducer and mid-range assembly.

Follow the instructions below to rotate the transducer and mid-range assembly.



2-channel system

When arranging a 2-channel system, the listening position and the speakers should form an equilateral triangle. The speakers should be positioned approximately 1.8 - 3m (6 - 10') apart. They should be positioned so that the transducer is at approximate ear height when you are in your listening position.



Setting up your system

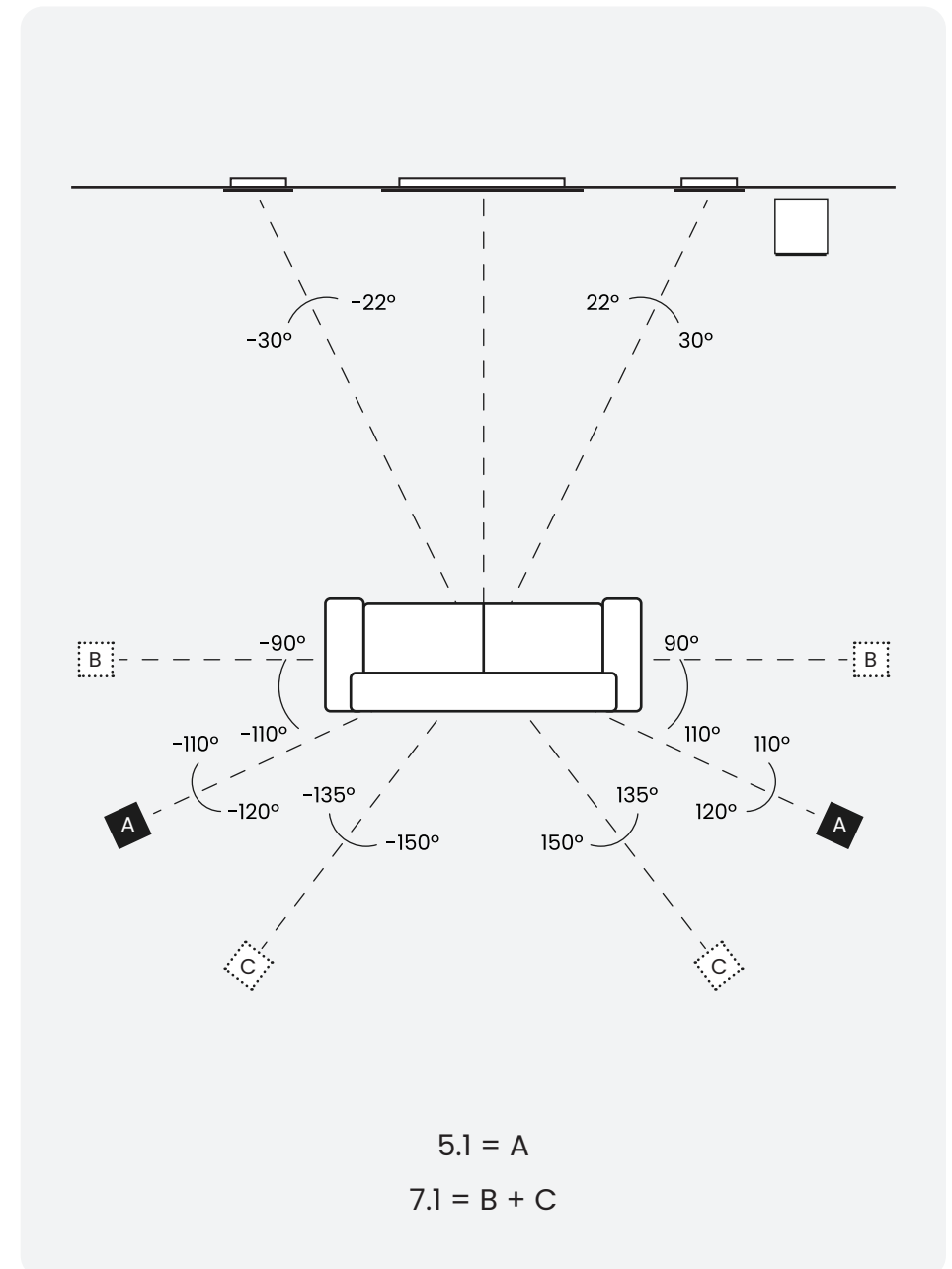
AV positioning

Please refer to the illustration on the right for the ideal angles and positions of each speaker in your surround system.

If setting up a 5.1 system you should place your surrounds in position (A).

If setting up a 7.1 system you should place your side speakers in position (B) and rear speakers in position (C) to create a full 360° soundstage.

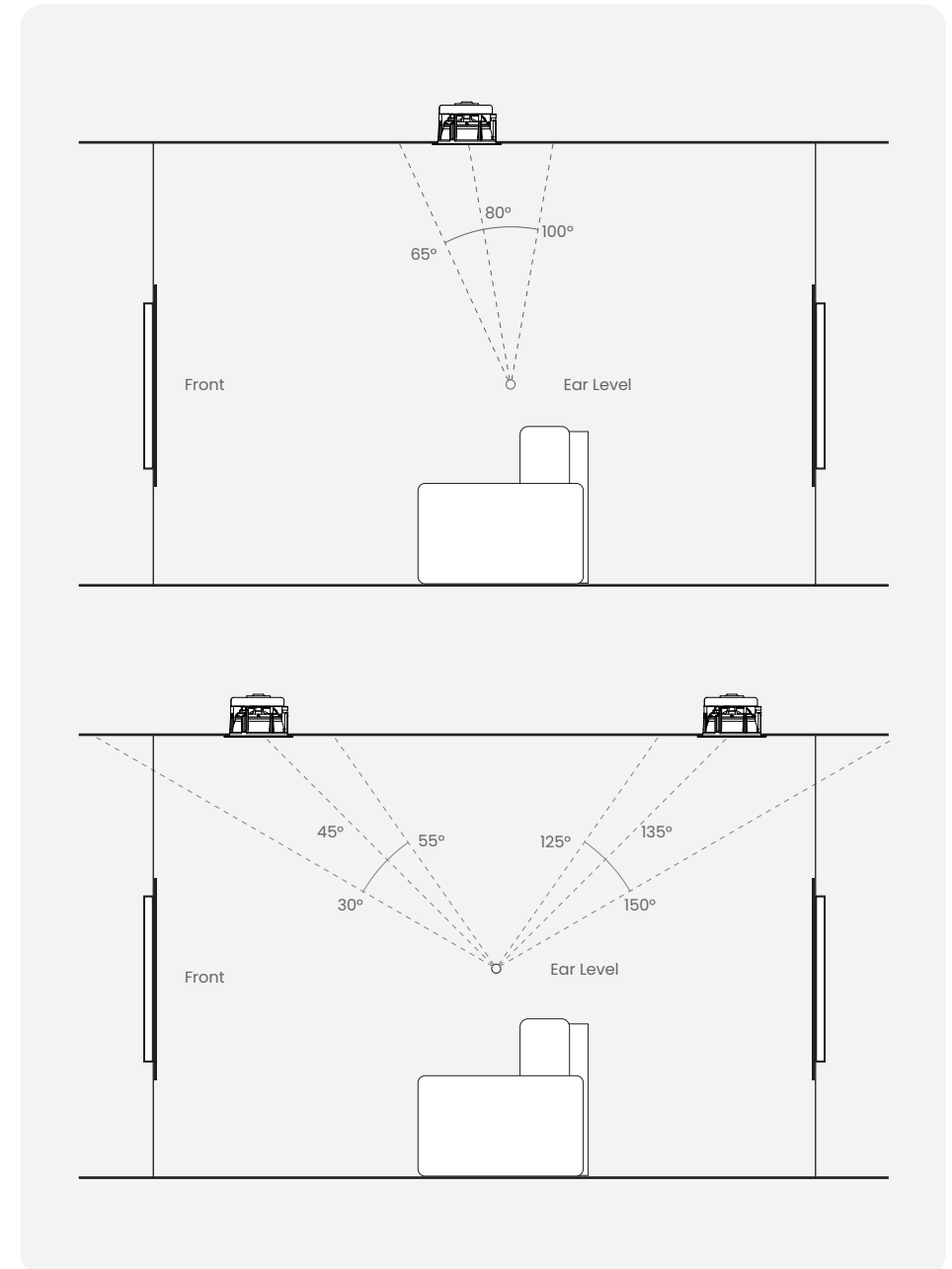
The centre channel should be positioned so that it is pointing at the viewing position and at approximate ear height.



Dolby Atmos®

When arranging the overhead channels in a Dolby Atmos® system, we would recommend using our three-way in-ceiling speakers such as our Platinum PLIC II speakers. These employ a unique midrange / tweeter module, which offers a wider dispersion characteristic, and are ideal for Dolby Atmos® duties.

Please see the diagram on the right for ideal positioning of 2 or 4 Dolby Atmos® speaker setups. Typically these would be in line with the front left and right speakers.

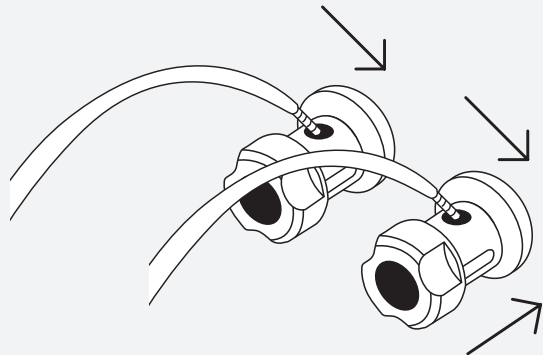


Connecting speaker cables

The Platinum In-Wall 3G has one set of terminals for single wiring. Single wiring is achieved by using a single set of cables to the binding posts on the side of the speaker. Internally the speaker crossover guides the frequencies to the appropriate driver/tweeter - low frequencies to the bass drivers, mid frequencies to the mid/bass driver and high frequencies to the transducer.

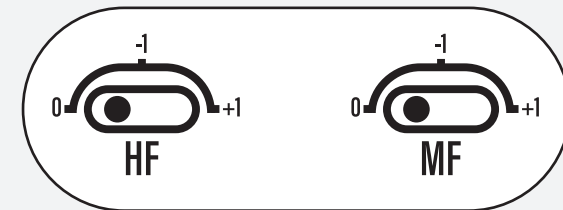
The binding posts are sprung for ease of use and will accept bare wire only.

Press down on each binding post to reveal the through hole and pass the bare wire through the hole. Release the binding post and it will automatically clamp the cable in place. Ensure there are no loose strands of cables to cause a short circuit.



Level adjustment switches

The Platinum In-Wall 3G comes with a pair of switches to adjust the mid and high frequency levels. These are located on the front of the cabinet at the bottom (when positioned vertically) and adjustment will either boost or attenuate the mid-range and tweeter levels by +/-1dB. There are separate switches for each unit, and experimentation is recommended to achieve the perfect combination for your environment.



Using your speakers

Running-in your speakers

Run your speakers in by playing normal music at low-mid listening levels for approximately 50-70 hours play time. You may find the sound will continue to improve even after the 70 hour mark.

This can be done naturally over time: like a fine wine the performance will improve with age.

Warranty

In the unlikely event that there is a defect with this product, it is covered by the Monitor Audio manufacturer's warranty, provided that the product was supplied by an authorised Monitor Audio retailer.

For the period of cover please refer to the product page on our website at monitoraudio.com

Register your Platinum In-Wall 3G speaker

Register your speakers using the QR code
or visit monitoraudio.com/registration



Specifications

Model	Platinum In-Wall 3G
System Format	3-way
Frequency response (-6dB) Free-Field	41 Hz - >60 kHz
Frequency response (-6dB) In room	27 Hz - >60 kHz
Sensitivity (2.83v @ 1m)	88 dB
Nominal impedance	4 Ohms
Minimum Impedance	4.1 Ohms @ 1.6 kHz
Continuous Power Handling (RMS into 4 Ohms, Pink Noise with 6dB Crest Factor)	300 W
Recommended Amplifier Power (RMS into 4 Ohm, Music Signal)	150-600 W
Bass Alignment	Sealed
Crossover Frequency	LF/MF: 825 Hz/MF/HF: 3 kHz
Drive Unit Complement	2 x 6" RDT III bass driver, 1 x 4" RDT III mid-range driver, 1 x MPD III tweeter
External Dimensions including Grille and Terminals (H x W x D)	1207 x 332 x 105.5 mm 47 ^{9/16} x 13 ^{1/16} x 4 ^{4/16} "
Cut Out Dimensions	1175 x 300 x 97.5mm 46 ^{1/4} x 11 ^{3/16} x 3 ^{3/16} "
Weight (Each)	27.7 kg 61 lb

CEDIA
MEMBER

Monitor Audio Ltd.
24 Brook Road
Rayleigh, Essex
SS6 7XJ
England
Tel: +44 (0)1268 740580
Email: info@monitoraudio.group

monitoraudio.com